

# Data Report

## Teacher Salary, Experience, and Degree Level, 2010-11

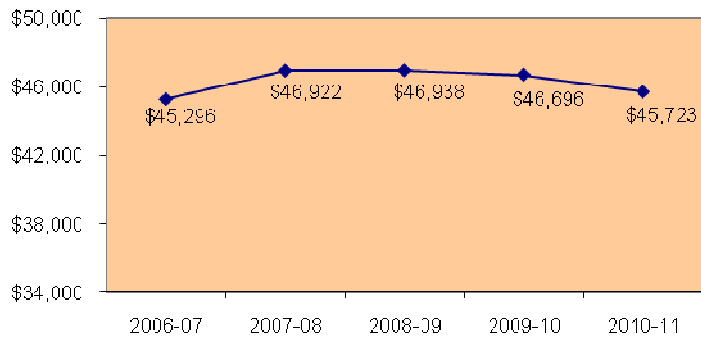
Table 1: Teachers' Average Years of Experience by Degree Level, 2010-11..2  
 Table 2: Teachers by Degree Level, 2008-09 through 2010-11 .....2  
 Table 3: Average Teacher Salaries by Degree Level, 2010-11 .....3  
 Table 4: Teachers by Degree Level, 2010-11 .....4  
 Table 5: Teachers' Average Years of Experience by Degree Level, 2010-11..5  
 Table 6: Minimum/Maximum Teacher Salaries by Degree Level, 2010-11 .....6  
 Table 7: Median Teacher Salaries by Degree Level, 2010-11 .....7  
 Table 8: Comparison of Average Teacher Salaries, 2006-07 through 2010-11 .....8  
 Table 9: Percent Change in Average Teacher Salaries, 2009-10 to 2010-11 .9  
 Table 10: Average Teacher Salaries in Rank Order, 2010-11 .....10

### Average Salaries

The average salary paid to a Florida public school teacher in the 2010-11 school year was \$45,723. This represents a decrease of \$973 (-2.08 percent) from the average salary of \$46,696 for the 2009-10 school year.

Figure 1 displays the average teacher salaries in Florida public schools from 2006-07 through 2010-11. The average teacher salary increased by \$427 since 2006-07, an increase of 0.94 percent.

**Figure 1: Average Teacher\* Salary 2006-07 through 2010-11\*\***



\*A professional paid on the instructional salary schedule negotiated by a Florida school district.

\*\*Data Source: Florida DOE Staff Database, Survey 3, February 7-11, 2011, as of August 8, 2011



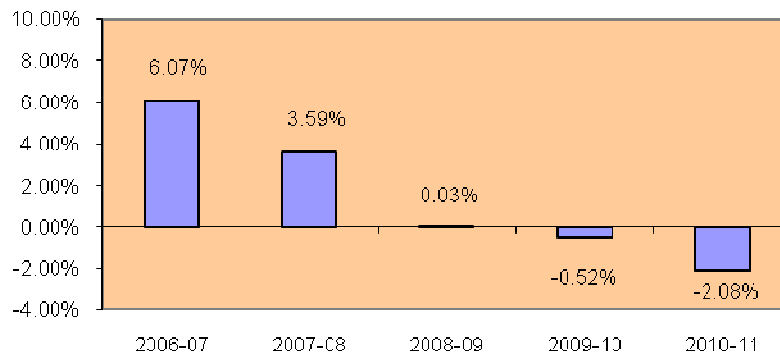
Florida Department of Education  
 Gerard Robinson, Commissioner

### Cautionary Note

In Florida, each public school district, after collective bargaining activities, adopts a salary schedule for instructional personnel in that district. In some school districts, a salary schedule for the school year is negotiated and adopted after the collection of salary data for that school year by the Department of Education (DOE). In many of these districts, the final negotiated salary schedule provides retroactive pay to instructional personnel for the entire school year. When this happens, the salary information on the DOE Staff Database does not reflect the subsequent salary increase for that district. Users of teacher salary data are advised to be aware of this and other factors affecting the data when making judgments and drawing conclusions based on these data.

Figure 2 shows the percent change in average teacher salaries for the past five years. The highest percent increase over the previous year occurred in 2006-07 at 6.07 percent. In 2010-11 the average teacher salary decreased by 2.08 percent.

**Figure 2: Percent Change in Average Teacher Salary  
2006-07 through 2010-11\***



**Experience**

For all degree levels, Florida teachers currently average 12.29 years of teaching experience, as shown in Table 1 below. The average number of years of experience includes both public and private teaching experience from within and outside the state. Since teachers' average years of experience greatly impacts the average salary for teachers, this factor should be taken into consideration when comparing average teacher salaries of the districts.

**Table 1: Teachers' Average Years of Experience  
by Degree Level, 2010-11\***

Bachelor's	10.50
Master's	14.76
Specialist	16.21
Doctorate	15.40
All Degrees	12.29

**Degree Level**

Table 2 below displays the number and percent of teachers at each degree level for school years 2008-09 through 2010-11. The proportion of teachers at each degree level has remained relatively consistent.

**Table 2: Teachers by Degree Level, 2008-09 through 2010-11\***

	<u>2008-09</u>		<u>2009-10</u>		<u>2010-11</u>	
	<u>Number</u>	<u>Percent</u>	<u>Number</u>	<u>Percent</u>	<u>Number</u>	<u>Percent</u>
<b>Bachelor's</b>	109,789	59.69	107,842	59.12	110,116	59.29
<b>Master's</b>	66,757	36.30	67,141	36.81	68,208	36.72
<b>Specialist</b>	4,901	2.66	4,967	2.72	4,965	2.67
<b>Doctorate</b>	2,478	1.35	2,458	1.35	2,450	1.32
<b>All Degrees</b>	183,925	100.00	182,408	100.00	185,739	100.00

District-level information on teacher salaries, experience, and degree level is displayed in Table 3 through Table 8 on the following pages.

\* Survey 3, February 7-11, 2011, as of August 8, 2011

**Table 3: Average Teacher Salaries by Degree Level, 2010-11\***

District Number	District Name	Bachelor's		Master's		Specialist		Doctorate		Total	
		Number	Salary	Number	Salary	Number	Salary	Number	Salary	Number	Salary
1	Alachua	924	\$38,253	927	\$43,098	111	\$46,696	45	\$49,225	2,007	\$41,204
2	Baker	221	\$40,218	86	\$47,331	1	\$40,388	2	\$56,668	310	\$42,298
3	Bay	1,265	\$39,994	623	\$47,541	51	\$49,596	17	\$50,666	1,956	\$42,741
4	Bradford	185	\$37,884	58	\$42,462	5	\$41,420	3	\$44,382	251	\$39,090
5	Brevard	2,918	\$42,178	2,067	\$47,637	58	\$52,748	58	\$51,012	5,101	\$44,611
6	Broward	9,057	\$40,498	6,766	\$43,978	446	\$44,694	262	\$49,645	16,531	\$42,181
7	Calhoun	117	\$37,326	62	\$43,747	2	\$45,285	4	\$47,685	185	\$39,788
8	Charlotte	587	\$44,065	536	\$51,881	21	\$57,344	14	\$57,662	1,158	\$48,088
9	Citrus	737	\$41,641	502	\$48,813	21	\$52,303	11	\$54,934	1,271	\$44,765
10	Clay	1,889	\$43,901	807	\$48,353	12	\$63,045	11	\$55,446	2,719	\$45,353
11	Collier	1,504	\$47,081	1,434	\$57,056	81	\$58,690	50	\$63,789	3,069	\$52,320
12	Columbia	544	\$39,181	211	\$45,452	8	\$50,238	2	\$61,590	765	\$41,085
13	Dade	9,033	\$46,790	8,186	\$53,676	2,084	\$59,710	548	\$62,085	19,851	\$51,408
14	DeSoto	257	\$40,314	72	\$44,511	2	\$56,345	3	\$38,349	334	\$41,297
15	Dixie	89	\$39,761	41	\$45,404	0	\$0	0	\$0	130	\$41,540
16	Duval	5,698	\$44,424	2,546	\$50,844	55	\$56,019	89	\$53,176	8,388	\$46,541
17	Escambia	1,846	\$39,033	1,156	\$45,157	58	\$48,213	21	\$47,291	3,081	\$41,560
18	Flagler	548	\$44,971	305	\$53,149	18	\$53,141	5	\$59,072	876	\$48,067
19	Franklin	52	\$40,978	35	\$43,443	2	\$48,603	1	\$50,808	90	\$42,216
20	Gadsden	294	\$34,668	160	\$37,427	6	\$42,116	5	\$35,334	465	\$35,721
21	Gilchrist	125	\$41,635	58	\$46,015	3	\$37,333	0	\$0	186	\$42,931
22	Glades	112	\$43,295	16	\$48,036	0	\$0	3	\$57,340	131	\$44,196
23	Gulf	103	\$40,489	58	\$45,538	4	\$49,248	0	\$0	165	\$42,476
24	Hamilton	99	\$41,764	33	\$46,304	1	\$47,356	3	\$43,580	136	\$42,947
25	Hardee	355	\$42,140	9	\$50,765	1	\$42,742	0	\$0	365	\$42,354
26	Hendry	301	\$41,003	130	\$46,553	4	\$49,944	3	\$47,740	438	\$42,778
27	Hernando	1,154	\$40,880	566	\$46,096	18	\$46,431	14	\$48,202	1,752	\$42,681
28	Highlands	590	\$42,486	264	\$48,893	5	\$49,445	9	\$49,704	868	\$44,550
29	Hillsborough	10,335	\$42,894	6,532	\$49,479	353	\$54,988	243	\$54,468	17,463	\$45,763
30	Holmes	158	\$38,806	90	\$45,676	5	\$45,012	0	\$0	253	\$41,373
31	Indian River	770	\$43,678	370	\$48,795	62	\$53,661	10	\$49,180	1,212	\$45,796
32	Jackson	361	\$37,614	187	\$45,043	34	\$51,625	2	\$48,593	584	\$40,846
33	Jefferson	61	\$39,774	22	\$44,350	1	\$56,438	0	\$0	84	\$41,171
34	Lafayette	59	\$40,778	19	\$46,280	1	\$47,202	0	\$0	79	\$42,182
35	Lake	1,870	\$39,784	1,079	\$44,655	0	\$0	32	\$47,504	2,981	\$41,630
36	Lee	3,498	\$43,112	1,756	\$50,214	72	\$53,846	67	\$51,985	5,393	\$45,678
37	Leon	1,327	\$39,508	922	\$44,910	59	\$47,076	38	\$50,720	2,346	\$42,003
38	Levy	248	\$41,397	143	\$45,143	8	\$51,138	2	\$41,320	401	\$42,927
39	Liberty	72	\$37,386	42	\$44,386	3	\$38,026	1	\$55,431	118	\$40,047
40	Madison	131	\$38,630	69	\$44,745	5	\$46,573	0	\$0	205	\$40,882
41	Manatee	1,570	\$44,096	1,249	\$51,415	71	\$57,977	59	\$58,553	2,949	\$47,819
42	Marion	2,029	\$41,621	926	\$47,371	57	\$54,242	30	\$51,548	3,042	\$43,706
43	Martin	767	\$43,372	494	\$48,999	20	\$57,816	10	\$55,204	1,291	\$45,841
44	Monroe	345	\$54,384	257	\$62,057	5	\$61,847	8	\$65,701	615	\$57,798
45	Nassau	455	\$42,321	277	\$49,363	5	\$49,461	6	\$51,195	743	\$45,066
46	Okealoosa	1,074	\$46,944	715	\$56,051	46	\$62,155	25	\$66,342	1,860	\$51,082
47	Okeechobee	374	\$41,925	94	\$48,666	5	\$52,429	1	\$43,944	474	\$43,377
48	Orange	7,634	\$42,403	4,921	\$47,801	194	\$49,850	150	\$52,777	12,899	\$44,695
49	Osceola	1,994	\$42,995	1,225	\$49,169	75	\$51,432	32	\$54,987	3,326	\$45,574
50	Palm Beach	8,730	\$46,167	3,485	\$50,105	71	\$54,178	102	\$50,804	12,388	\$47,359
51	Pasco	3,247	\$40,512	1,872	\$46,129	63	\$48,701	47	\$50,418	5,229	\$42,710
52	Pinellas	4,966	\$43,885	3,045	\$48,583	137	\$52,181	75	\$51,995	8,223	\$45,837
53	Polk	5,336	\$41,052	1,952	\$46,704	82	\$52,902	48	\$49,688	7,418	\$42,726
54	Putnam	477	\$44,038	210	\$51,465	4	\$54,993	5	\$50,188	696	\$46,386
55	St. Johns	1,172	\$44,031	771	\$50,389	14	\$56,595	14	\$53,395	1,971	\$46,673
56	St. Lucie	1,738	\$39,756	893	\$46,824	32	\$52,669	35	\$52,401	2,698	\$42,413
57	Santa Rosa	1,102	\$42,005	605	\$48,816	20	\$53,325	14	\$49,357	1,741	\$44,561
58	Sarasota	909	\$48,818	1,674	\$58,860	81	\$72,628	51	\$63,392	2,715	\$55,994
59	Seminole	2,304	\$43,803	1,893	\$51,742	132	\$56,784	88	\$63,438	4,417	\$47,985
60	Sumter	262	\$44,339	126	\$51,029	3	\$48,717	0	\$0	391	\$46,528
61	Suwannee	307	\$44,831	108	\$50,791	4	\$52,812	2	\$45,658	421	\$46,440
62	Taylor	130	\$37,292	60	\$47,286	13	\$55,627	1	\$56,487	204	\$41,494
63	Union	106	\$36,466	50	\$40,826	1	\$41,220	2	\$38,642	159	\$37,895
64	Volusia	2,574	\$40,780	1,771	\$48,475	101	\$54,104	45	\$52,686	4,491	\$44,234
65	Wakulla	216	\$37,484	122	\$45,248	7	\$46,328	0	\$0	345	\$40,409
66	Walton	375	\$43,125	178	\$50,054	15	\$50,859	11	\$52,055	579	\$45,625
67	Washington	201	\$39,897	77	\$48,096	9	\$51,290	1	\$53,820	288	\$42,493
	<b>Districts 1-67</b>	<b>109,888</b>	<b>\$42,936</b>	<b>67,995</b>	<b>\$49,205</b>	<b>4,948</b>	<b>\$55,407</b>	<b>2,440</b>	<b>\$55,256</b>	<b>185,271</b>	<b>\$45,732</b>
68	School for Deaf/Blind	57	\$40,730	69	\$47,680	0	\$0	1	\$38,049	127	\$44,485
69	Dozier/Okeechobee	10	\$55,657	8	\$53,006	4	\$59,615	0	\$0	22	\$55,413
72	FAU Lab School	92	\$39,379	61	\$45,310	3	\$71,000	0	\$0	156	\$42,306
73	FSU Charter	1	\$34,899	0	\$0	1	\$32,599	0	\$0	2	\$33,749
74	FAMU Lab School	30	\$36,101	12	\$38,987	2	\$37,168	1	\$34,099	45	\$36,873
75	UF Lab School	38	\$35,103	63	\$39,101	7	\$50,936	8	\$46,381	116	\$39,008
	<b>Florida</b>	<b>110,116</b>	<b>\$42,928</b>	<b>68,208</b>	<b>\$49,189</b>	<b>4,965</b>	<b>\$55,402</b>	<b>2,450</b>	<b>\$55,211</b>	<b>185,739</b>	<b>\$45,723</b>

\* Survey 3, February 7-11, 2011, as of August 8, 2011

**Table 4: Teachers by Degree Level, 2010-11\***

District Number	District Name	Bachelor's		Master's		Specialist		Doctorate		Total Number
		Number	% of Total	Number	% of Total	Number	% of Total	Number	% of Total	
1	Alachua	924	46.04	927	46.19	111	5.53	45	2.24	2,007
2	Baker	221	71.29	86	27.74	1	0.32	2	0.65	310
3	Bay	1,265	64.67	623	31.85	51	2.61	17	0.87	1,956
4	Bradford	185	73.71	58	23.11	5	1.99	3	1.20	251
5	Brevard	2,918	57.20	2,067	40.52	58	1.14	58	1.14	5,101
6	Broward	9,057	54.79	6,766	40.93	446	2.70	262	1.58	16,531
7	Calhoun	117	63.24	62	33.51	2	1.08	4	2.16	185
8	Charlotte	587	50.69	536	46.29	21	1.81	14	1.21	1,158
9	Citrus	737	57.99	502	39.50	21	1.65	11	0.87	1,271
10	Clay	1,889	69.47	807	29.68	12	0.44	11	0.40	2,719
11	Collier	1,504	49.01	1,434	46.73	81	2.64	50	1.63	3,069
12	Columbia	544	71.11	211	27.58	8	1.05	2	0.26	765
13	Dade	9,033	45.50	8,186	41.24	2,084	10.50	548	2.76	19,851
14	DeSoto	257	76.95	72	21.56	2	0.60	3	0.90	334
15	Dixie	89	68.46	41	31.54	0	0.00	0	0.00	130
16	Duval	5,698	67.93	2,546	30.35	55	0.66	89	1.06	8,388
17	Escambia	1,846	59.92	1,156	37.52	58	1.88	21	0.68	3,081
18	Flagler	548	62.56	305	34.82	18	2.05	5	0.57	876
19	Franklin	52	57.78	35	38.89	2	2.22	1	1.11	90
20	Gadsden	294	63.23	160	34.41	6	1.29	5	1.08	465
21	Gilchrist	125	67.20	58	31.18	3	1.61	0	0.00	186
22	Glades	112	85.50	16	12.21	0	0.00	3	2.29	131
23	Gulf	103	62.42	58	35.15	4	2.42	0	0.00	165
24	Hamilton	99	72.79	33	24.26	1	0.74	3	2.21	136
25	Hardee	355	97.26	9	2.47	1	0.27	0	0.00	365
26	Hendry	301	68.72	130	29.68	4	0.91	3	0.68	438
27	Hernando	1,154	65.87	566	32.31	18	1.03	14	0.80	1,752
28	Highlands	590	67.97	264	30.41	5	0.58	9	1.04	868
29	Hillsborough	10,335	59.18	6,532	37.40	353	2.02	243	1.39	17,463
30	Holmes	158	62.45	90	35.57	5	1.98	0	0.00	253
31	Indian River	770	63.53	370	30.53	62	5.12	10	0.83	1,212
32	Jackson	361	61.82	187	32.02	34	5.82	2	0.34	584
33	Jefferson	61	72.62	22	26.19	1	1.19	0	0.00	84
34	Lafayette	59	74.68	19	24.05	1	1.27	0	0.00	79
35	Lake	1,870	62.73	1,079	36.20	0	0.00	32	1.07	2,981
36	Lee	3,498	64.86	1,756	32.56	72	1.34	67	1.24	5,393
37	Leon	1,327	56.56	922	39.30	59	2.51	38	1.62	2,346
38	Levy	248	61.85	143	35.66	8	2.00	2	0.50	401
39	Liberty	72	61.02	42	35.59	3	2.54	1	0.85	118
40	Madison	131	63.90	69	33.66	5	2.44	0	0.00	205
41	Manatee	1,570	53.24	1,249	42.35	71	2.41	59	2.00	2,949
42	Marion	2,029	66.70	926	30.44	57	1.87	30	0.99	3,042
43	Martin	767	59.41	494	38.26	20	1.55	10	0.77	1,291
44	Monroe	345	56.10	257	41.79	5	0.81	8	1.30	615
45	Nassau	455	61.24	277	37.28	5	0.67	6	0.81	743
46	Okaloosa	1,074	57.74	715	38.44	46	2.47	25	1.34	1,860
47	Okeechobee	374	78.90	94	19.83	5	1.05	1	0.21	474
48	Orange	7,634	59.18	4,921	38.15	194	1.50	150	1.16	12,899
49	Osceola	1,994	59.95	1,225	36.83	75	2.25	32	0.96	3,326
50	Palm Beach	8,730	70.47	3,485	28.13	71	0.57	102	0.82	12,388
51	Pasco	3,247	62.10	1,872	35.80	63	1.20	47	0.90	5,229
52	Pinellas	4,966	60.39	3,045	37.03	137	1.67	75	0.91	8,223
53	Polk	5,336	71.93	1,952	26.31	82	1.11	48	0.65	7,418
54	Putnam	477	68.53	210	30.17	4	0.57	5	0.72	696
55	St. Johns	1,172	59.46	771	39.12	14	0.71	14	0.71	1,971
56	St. Lucie	1,738	64.42	893	33.10	32	1.19	35	1.30	2,698
57	Santa Rosa	1,102	63.30	605	34.75	20	1.15	14	0.80	1,741
58	Sarasota	909	33.48	1,674	61.66	81	2.98	51	1.88	2,715
59	Seminole	2,304	52.16	1,893	42.86	132	2.99	88	1.99	4,417
60	Sumter	262	67.01	126	32.23	3	0.77	0	0.00	391
61	Suwannee	307	72.92	108	25.65	4	0.95	2	0.48	421
62	Taylor	130	63.73	60	29.41	13	6.37	1	0.49	204
63	Union	106	66.67	50	31.45	1	0.63	2	1.26	159
64	Volusia	2,574	57.31	1,771	39.43	101	2.25	45	1.00	4,491
65	Wakulla	216	62.61	122	35.36	7	2.03	0	0.00	345
66	Walton	375	64.77	178	30.74	15	2.59	11	1.90	579
67	Washington	201	69.79	77	26.74	9	3.13	1	0.35	288
	<b>Districts 1-67</b>	<b>109,888</b>	<b>59.31</b>	<b>67,995</b>	<b>36.70</b>	<b>4,948</b>	<b>2.67</b>	<b>2,440</b>	<b>1.32</b>	<b>185,271</b>
68	School for Deaf/Blind	57	44.88	69	54.33	0	0.00	1	0.79	127
69	Dozier/Okeechobee	10	45.45	8	36.36	4	18.18	0	0.00	22
72	FAU Lab School	92	58.97	61	39.10	3	1.92	0	0.00	156
73	FSU Charter	1	50.00	0	0.00	1	50.00	0	0.00	2
74	FAMU Lab School	30	66.67	12	26.67	2	4.44	1	2.22	45
75	UF Lab School	38	32.76	63	54.31	7	6.03	8	6.90	116
	<b>Florida</b>	<b>110,116</b>	<b>59.29</b>	<b>68,208</b>	<b>36.72</b>	<b>4,965</b>	<b>2.67</b>	<b>2,450</b>	<b>1.32</b>	<b>185,739</b>

\* Survey 3, February 7-11, 2011, as of August 8, 2011

**Table 5: Teachers' Average Years of Experience by Degree Level, 2010-11\***

District Number	District Name	Bachelor's	Master's	Specialist	Doctorate	All Degrees
1	Alachua	11.31	15.22	17.43	17.31	13.60
2	Baker	9.41	14.41	1.00	13.50	10.80
3	Bay	12.45	16.60	18.15	18.58	14.02
4	Bradford	10.59	11.41	6.80	9.00	10.67
5	Brevard	12.28	16.16	21.17	17.65	14.02
6	Broward	11.22	15.51	15.86	17.38	13.20
7	Calhoun	10.81	16.66	11.00	12.50	12.81
8	Charlotte	12.03	18.27	19.66	21.07	15.17
9	Citrus	11.07	18.16	18.80	24.09	14.11
10	Clay	10.53	13.77	20.40	18.20	11.52
11	Collier	9.82	15.10	15.18	18.02	12.57
12	Columbia	10.29	15.53	18.37	33.00	11.88
13	Dade	10.06	13.42	15.79	14.13	12.16
14	DeSoto	11.14	16.04	27.50	9.66	12.28
15	Dixie	12.62	18.85	0.00	0.00	14.59
16	Duval	10.15	14.72	18.12	12.25	11.61
17	Escambia	8.53	13.03	16.05	13.23	10.40
18	Flagler	10.02	14.57	12.94	14.40	11.69
19	Franklin	10.53	13.05	25.00	32.00	12.07
20	Gadsden	9.66	12.65	16.83	7.00	10.75
21	Gilchrist	12.72	16.15	12.00	0.00	13.77
22	Glades	9.78	15.06	0.00	20.66	10.68
23	Gulf	13.33	17.34	20.50	0.00	14.91
24	Hamilton	11.39	9.66	4.00	12.00	10.93
25	Hardee	10.65	16.00	0.00	0.00	10.77
26	Hendry	6.63	8.52	8.50	20.50	7.50
27	Hernando	10.27	15.08	14.83	10.21	11.87
28	Highlands	12.38	17.52	18.20	17.55	14.03
29	Hillsborough	9.30	14.01	14.85	14.02	11.24
30	Holmes	10.31	16.81	9.60	0.00	12.61
31	Indian River	11.89	15.11	15.91	17.80	13.13
32	Jackson	10.04	17.08	22.85	14.00	13.05
33	Jefferson	8.04	9.36	28.00	0.00	8.63
34	Lafayette	11.88	16.47	15.00	0.00	13.02
35	Lake	9.89	13.92	0.00	14.59	11.40
36	Lee	10.14	15.93	17.91	16.26	12.21
37	Leon	11.29	16.04	17.88	18.69	13.45
38	Levy	12.37	14.27	22.87	7.50	13.23
39	Liberty	9.00	13.38	4.00	4.00	10.38
40	Madison	10.51	13.92	12.40	0.00	11.70
41	Manatee	9.81	14.25	17.30	14.72	11.98
42	Marion	10.65	15.23	19.73	14.03	12.25
43	Martin	9.23	12.29	13.95	10.80	10.49
44	Monroe	11.86	15.72	14.20	14.00	13.53
45	Nassau	8.97	13.87	12.60	10.33	10.83
46	Okaloosa	12.52	17.46	18.91	21.40	14.70
47	Okeechobee	11.70	17.55	20.80	7.00	12.95
48	Orange	10.30	14.07	16.06	15.59	11.91
49	Osceola	8.71	13.25	14.06	15.68	10.57
50	Palm Beach	11.16	14.17	15.83	14.29	12.06
51	Pasco	9.32	14.08	12.68	15.53	11.12
52	Pinellas	12.29	15.92	15.85	15.82	13.73
53	Polk	10.01	15.28	17.39	15.54	11.51
54	Putnam	11.32	16.78	19.00	13.00	13.03
55	St. Johns	9.05	11.50	10.14	9.57	10.02
56	St. Lucie	9.32	14.13	18.93	14.40	11.09
57	Santa Rosa	11.71	16.52	20.20	16.64	13.52
58	Sarasota	11.99	15.10	15.74	13.84	14.05
59	Seminole	11.97	16.59	17.37	20.96	14.29
60	Sumter	10.45	15.82	14.00	0.00	12.21
61	Suwannee	12.48	16.36	10.25	7.00	13.42
62	Taylor	5.09	11.86	14.07	17.00	7.71
63	Union	9.51	13.85	16.00	8.00	10.88
64	Volusia	11.53	16.60	20.87	17.28	13.80
65	Wakulla	10.28	17.13	15.42	0.00	12.81
66	Walton	7.35	10.82	7.66	6.36	8.40
67	Washington	9.20	16.33	21.33	21.00	11.53
	<b>Districts 1-67</b>	<b>10.51</b>	<b>14.76</b>	<b>16.20</b>	<b>15.41</b>	<b>12.29</b>
69	Dozier/Okeechobee	13.50	12.87	18.00	0.00	14.09
72	FAU Lab School	6.96	10.10	28.00	0.00	8.58
73	FSU Charter	6.00	0.00	6.00	0.00	6.00
74	FAMU Lab School	6.80	16.00	8.00	0.00	9.15
75	UF Lab School	8.50	11.42	22.80	13.00	11.06
	<b>Florida</b>	<b>10.50</b>	<b>14.76</b>	<b>16.21</b>	<b>15.40</b>	<b>12.29</b>

\* Survey 3, February 7-11, 2011, as of August 8, 2011

**Table 6: Minimum/Maximum Teacher Salaries by Degree Level, 2010-11\***

District	District Name	Bachelor's		Master's		Specialist		Doctorate	
		Minimum	Maximum	Minimum	Maximum	Minimum	Maximum	Minimum	Maximum
1	Alachua	\$32,450	\$49,850	\$33,950	\$53,950	\$34,950	\$57,050	\$35,950	\$60,475
2	Baker	\$34,168	\$59,000	\$36,794	\$61,626	\$37,844	\$62,676	\$38,966	\$63,798
3	Bay	\$32,305	\$55,321	\$34,869	\$58,292	\$36,815	\$60,270	\$38,731	\$62,250
4	Bradford	\$32,025	\$55,094	\$34,525	\$57,594	\$35,225	\$58,294	\$36,025	\$59,094
5	Brevard**	\$36,000	\$56,350	\$38,625	\$58,975	\$39,900	\$60,250	\$41,200	\$61,550
6	Broward**	\$39,000	\$71,250	\$42,650	\$74,900	\$45,800	\$78,050	\$47,000	\$79,250
7	Calhoun	\$31,475	\$47,375	\$33,900	\$49,800	\$35,170	\$51,070	\$36,385	\$52,285
8	Charlotte	\$37,440	\$55,030	\$40,990	\$58,580	\$42,990	\$60,580	\$44,590	\$62,180
9	Citrus	\$33,858	\$52,521	\$35,858	\$54,521	\$36,858	\$55,521	\$37,858	\$56,521
10	Clay**	\$37,800	\$60,000	\$39,800	\$62,000	\$40,500	\$62,700	\$41,100	\$63,300
11	Collier	\$38,198	\$60,793	\$40,893	\$66,808	\$42,393	\$68,308	\$43,393	\$69,308
12	Columbia	\$32,400	\$56,040	\$35,200	\$58,840	\$36,350	\$59,990	\$37,550	\$61,190
13	Dade**	\$38,500	\$68,225	\$41,600	\$71,325	\$43,650	\$73,375	\$45,700	\$75,425
14	DeSoto	\$35,108	\$55,534	\$38,308	\$58,734	\$38,466	\$58,892	\$40,069	\$60,495
15	Dixie	\$31,200	\$48,782	\$33,592	\$51,257	\$34,112	\$51,796	\$34,320	\$52,011
16	Duval**	\$37,300	\$65,301	\$38,300	\$68,449	\$39,300	\$69,888	\$40,300	\$71,891
17	Escambia	\$32,825	\$51,986	\$35,325	\$54,486	\$35,925	\$55,086	\$36,425	\$55,586
18	Flagler	\$38,213	\$57,677	\$40,693	\$60,427	\$42,463	\$61,927	\$43,713	\$63,177
19	Franklin	\$32,960	\$50,808	\$35,677	\$56,529	\$37,455	\$59,389	\$39,230	\$62,253
20	Gadsden**	\$30,910	\$46,208	\$32,178	\$47,475	\$32,729	\$48,026	\$33,391	\$48,687
21	Gilchrist	\$32,694	\$51,657	\$34,961	\$53,924	\$35,450	\$54,413	\$36,131	\$55,094
22	Glades**	\$34,000	\$55,000	\$35,500	\$57,400	\$37,500	\$60,600	\$39,000	\$63,000
23	Gulf	\$32,189	\$51,519	\$34,253	\$54,071	\$35,629	\$55,528	\$36,980	\$56,985
24	Hamilton**	\$32,829	\$50,116	\$35,329	\$52,616	\$36,329	\$53,616	\$36,829	\$54,116
25	Hardee	\$33,345	\$52,395	\$35,613	\$55,958	\$35,946	\$56,482	\$36,246	\$56,954
26	Hendry**	\$33,840	\$52,800	\$35,980	\$54,760	\$36,980	\$55,970	\$38,980	\$58,000
27	Hernando	\$35,000	\$54,350	\$37,500	\$56,850	\$38,500	\$57,850	\$39,500	\$58,850
28	Highlands	\$34,000	\$54,000	\$36,200	\$56,200	\$36,500	\$56,500	\$37,800	\$57,800
29	Hillsborough	\$37,201	\$61,906	\$40,129	\$64,834	\$41,601	\$66,306	\$43,057	\$67,762
30	Holmes	\$31,500	\$48,500	\$33,500	\$50,900	\$34,645	\$52,054	\$35,803	\$53,224
31	Indian River	\$35,500	\$57,100	\$38,453	\$60,053	\$39,409	\$61,009	\$40,374	\$61,974
32	Jackson	\$31,853	\$49,109	\$34,909	\$52,226	\$37,976	\$55,346	\$39,893	\$57,293
33	Jefferson**	\$32,500	\$50,000	\$34,125	\$52,500	\$34,938	\$53,750	\$35,750	\$55,000
34	Lafayette	\$33,983	\$51,532	\$36,183	\$53,732	\$37,283	\$54,832	\$37,943	\$55,492
35	Lake**	\$35,600	\$54,550	\$37,975	\$56,925	\$38,925	\$57,875	\$39,925	\$58,875
36	Lee	\$38,192	\$60,563	\$40,692	\$63,063	\$42,192	\$64,563	\$43,192	\$65,563
37	Leon	\$34,100	\$60,576	\$35,300	\$63,095	\$36,500	\$65,172	\$37,700	\$66,846
38	Levy	\$32,427	\$49,979	\$35,239	\$52,789	\$35,950	\$53,531	\$36,659	\$54,211
39	Liberty	\$31,770	\$49,812	\$34,704	\$52,746	\$36,304	\$54,346	\$36,705	\$54,747
40	Madison	\$33,000	\$56,098	\$35,500	\$60,375	\$36,400	\$61,802	\$36,400	\$61,802
41	Manatee**	\$38,517	\$61,450	\$39,555	\$66,700	\$41,966	\$71,550	\$44,376	\$75,100
42	Marion**	\$35,780	\$53,470	\$38,120	\$56,530	\$39,960	\$59,900	\$41,790	\$64,180
43	Martin	\$37,000	\$57,637	\$39,220	\$61,095	\$41,573	\$64,761	\$43,926	\$68,427
44	Monroe	\$42,330	\$70,264	\$44,088	\$76,555	\$45,036	\$78,473	\$45,577	\$80,184
45	Nassau	\$36,500	\$57,000	\$39,500	\$60,000	\$39,700	\$60,200	\$39,900	\$60,400
46	Okaloosa	\$32,428	\$64,036	\$34,212	\$67,454	\$35,833	\$70,561	\$37,455	\$73,667
47	Okeechobee	\$34,000	\$55,860	\$36,400	\$58,260	\$37,400	\$59,260	\$38,400	\$60,260
48	Orange**	\$37,000	\$62,003	\$39,605	\$64,608	\$40,993	\$65,996	\$42,267	\$67,270
49	Osceola	\$37,650	\$60,500	\$40,335	\$63,185	\$41,835	\$64,685	\$43,335	\$66,185
50	Palm Beach	\$36,822	\$71,245	\$39,822	\$74,245	\$41,322	\$75,745	\$42,822	\$77,245
51	Pasco**	\$36,420	\$58,470	\$39,120	\$61,170	\$40,820	\$62,870	\$41,820	\$63,870
52	Pinellas	\$37,013	\$59,998	\$39,193	\$62,178	\$40,363	\$63,348	\$41,513	\$64,498
53	Polk	\$35,000	\$55,175	\$37,181	\$57,356	\$37,899	\$58,074	\$38,220	\$58,395
54	Putnam	\$36,251	\$55,365	\$38,397	\$60,011	\$39,397	\$61,011	\$40,297	\$61,911
55	St. Johns	\$38,000	\$58,200	\$40,650	\$61,050	\$41,650	\$62,050	\$42,650	\$63,250
56	St. Lucie	\$35,356	\$59,717	\$38,621	\$62,921	\$41,014	\$65,435	\$42,092	\$66,565
57	Santa Rosa	\$32,092	\$59,181	\$34,659	\$61,748	\$35,943	\$63,032	\$37,227	\$64,316
58	Sarasota	\$38,530	\$52,068	\$41,747	\$65,126	\$44,604	\$72,706	\$46,510	\$75,811
59	Seminole**	\$36,000	\$64,884	\$40,136	\$68,946	\$43,586	\$72,386	\$47,041	\$75,818
60	Sumter	\$37,391	\$59,892	\$39,869	\$62,438	\$41,109	\$63,711	\$41,109	\$63,711
61	Suwannee	\$32,473	\$54,067	\$34,783	\$56,377	\$35,308	\$56,902	\$36,223	\$57,817
62	Taylor	\$30,000	\$50,826	\$33,226	\$56,607	\$36,896	\$60,133	\$39,673	\$62,677
63	Union	\$33,250	\$50,677	\$34,750	\$53,272	\$35,250	\$55,055	\$36,050	\$56,038
64	Volusia**	\$34,010	\$59,147	\$37,001	\$63,572	\$38,424	\$65,536	\$39,903	\$67,393
65	Wakulla	\$33,700	\$52,700	\$35,900	\$54,900	\$36,400	\$55,400	\$36,900	\$55,900
66	Walton**	\$34,700	\$61,205	\$36,400	\$62,930	\$37,900	\$64,405	\$39,500	\$66,005
67	Washington**	\$32,085	\$50,715	\$33,120	\$53,820	\$34,155	\$54,855	\$35,190	\$55,890
	<b>Florida</b>	<b>\$34,775</b>	<b>\$56,276</b>	<b>\$37,185</b>	<b>\$59,442</b>	<b>\$38,510</b>	<b>\$61,085</b>	<b>\$39,680</b>	<b>\$62,494</b>

\* According to districts' negotiated instructional/teacher salary schedules

\*\*2009-10 data

**Table 7: Median Teacher Salaries by Degree Level, 2010-11\***

District Number	District Name	Bachelor's	Master's	Specialist	Doctorate	Total
1	Alachua	\$35,300	\$40,653	\$44,375	\$48,800	\$38,550
2	Baker	\$36,131	\$46,116	\$40,389	\$49,540	\$37,332
3	Bay	\$35,873	\$45,599	\$47,600	\$50,549	\$40,759
4	Bradford	\$33,668	\$36,836	\$35,533	\$41,842	\$35,167
5	Brevard	\$39,824	\$44,926	\$52,151	\$47,942	\$42,421
6	Broward	\$35,110	\$38,303	\$38,709	\$43,629	\$36,141
7	Calhoun	\$35,400	\$42,060	\$43,200	\$46,430	\$37,320
8	Charlotte	\$41,864	\$51,051	\$56,221	\$56,932	\$46,657
9	Citrus	\$37,681	\$54,439	\$54,046	\$55,880	\$41,837
10	Clay	\$40,357	\$45,026	\$60,656	\$48,325	\$42,325
11	Collier	\$42,215	\$57,873	\$57,799	\$68,290	\$50,387
12	Columbia	\$34,333	\$43,680	\$49,990	\$61,590	\$38,020
13	Dade	\$41,547	\$50,102	\$58,251	\$61,552	\$45,754
14	DeSoto	\$37,213	\$43,348	\$47,261	\$38,304	\$37,738
15	Dixie	\$38,535	\$45,402			\$39,999
16	Duval	\$39,437	\$44,744	\$48,132	\$46,919	\$40,771
17	Escambia	\$38,628	\$44,395	\$47,129	\$45,893	\$38,628
18	Flagler	\$42,326	\$49,291	\$50,757	\$52,797	\$45,004
19	Franklin	\$40,163	\$42,393	\$46,398	\$50,808	\$41,633
20	Gadsden	\$31,853	\$35,018	\$38,897	\$34,586	\$33,312
21	Gilchrist	\$42,175	\$46,077	\$35,777		\$42,829
22	Glades	\$41,407	\$47,860		\$63,000	\$41,407
23	Gulf	\$37,288	\$44,967	\$50,311		\$40,667
24	Hamilton	\$39,402	\$45,951	\$47,356	\$40,212	\$40,926
25	Hardee	\$37,641	\$45,606	\$42,742		\$38,674
26	Hendry	\$37,848	\$44,649	\$46,849	\$57,389	\$40,115
27	Hernando	\$38,282	\$44,042	\$44,167	\$41,350	\$40,550
28	Highlands	\$39,647	\$49,921	\$44,500	\$48,800	\$44,282
29	Hillsborough	\$40,561	\$46,084	\$53,054	\$50,128	\$43,129
30	Holmes	\$35,500	\$48,020	\$39,003		\$41,685
31	Indian River	\$40,117	\$47,710	\$54,736	\$48,148	\$43,445
32	Jackson	\$35,447	\$44,344	\$55,346	\$39,893	\$39,893
33	Jefferson	\$34,125	\$46,856	\$56,438		\$39,375
34	Lafayette	\$39,324	\$44,576	\$47,202		\$41,520
35	Lake	\$36,902	\$41,369		\$44,225	\$38,900
36	Lee	\$39,285	\$47,501	\$49,510	\$49,736	\$43,247
37	Leon	\$36,366	\$39,418	\$43,073	\$52,349	\$37,870
38	Levy	\$40,732	\$43,622	\$53,531	\$38,697	\$42,769
39	Liberty	\$34,589	\$42,143	\$35,500	\$55,431	\$37,314
40	Madison	\$36,095	\$41,526	\$37,500		\$36,942
41	Manatee	\$40,086	\$49,923	\$58,970	\$56,310	\$44,826
42	Marion	\$37,623	\$45,109	\$58,620	\$48,730	\$39,783
43	Martin	\$41,215	\$46,262	\$63,110	\$50,063	\$43,677
44	Monroe	\$51,233	\$60,111	\$57,079	\$61,045	\$54,402
45	Nassau	\$39,158	\$47,600	\$45,294	\$48,000	\$42,500
46	Okaloosa	\$44,531	\$56,973	\$62,834	\$73,667	\$48,779
47	Okeechobee	\$39,545	\$47,346	\$42,945	\$43,945	\$39,590
48	Orange	\$38,878	\$44,325	\$46,193	\$46,987	\$41,405
49	Osceola	\$39,603	\$45,561	\$47,835	\$51,685	\$42,226
50	Palm Beach	\$40,360	\$46,088	\$55,129	\$45,148	\$42,388
51	Pasco	\$37,892	\$43,320	\$46,470	\$47,245	\$40,419
52	Pinellas	\$40,965	\$44,211	\$47,465	\$46,256	\$41,953
53	Polk	\$37,769	\$43,872	\$53,517	\$46,229	\$39,665
54	Putnam	\$42,842	\$50,397	\$51,397	\$46,118	\$44,331
55	St. Johns	\$42,045	\$47,020	\$56,830	\$49,020	\$44,370
56	St. Lucie	\$35,778	\$42,509	\$50,325	\$46,621	\$38,703
57	Santa Rosa	\$39,842	\$47,316	\$54,009	\$47,864	\$42,729
58	Sarasota	\$45,066	\$58,229	\$74,469	\$60,655	\$55,264
59	Seminole	\$39,303	\$47,090	\$51,137	\$62,032	\$43,301
60	Sumter	\$40,207	\$46,809	\$48,669		\$42,365
61	Suwannee	\$43,308	\$50,302	\$49,058	\$40,866	\$45,483
62	Taylor	\$33,676	\$47,622	\$52,449	\$56,487	\$38,448
63	Union	\$34,416	\$37,863	\$41,220	\$36,050	\$35,620
64	Volusia	\$37,605	\$44,768	\$50,352	\$50,135	\$41,065
65	Wakulla	\$34,700	\$43,400	\$40,900		\$37,042
66	Walton	\$39,150	\$47,720	\$44,330	\$45,930	\$43,380
67	Washington	\$38,655	\$49,680	\$52,785	\$53,820	\$42,435
	<b>Districts 1-67</b>	<b>\$39,604</b>	<b>\$45,570</b>	<b>\$52,215</b>	<b>\$52,800</b>	<b>\$42,200</b>
68	School for Deaf/Blind	\$37,800	\$43,850		\$38,050	\$41,450
69	Dozier/Okeechobee	\$55,890	\$46,575	\$52,031		\$54,559
72	FAU Lab School	\$36,680	\$41,512	\$79,086		\$38,703
73	FSU Charter	\$34,900		\$32,600		\$32,600
74	FAMU Lab School	\$35,122	\$37,169	\$37,169	\$34,100	\$35,423
75	UF Lab School	\$33,950	\$36,347	\$45,800	\$38,375	\$36,027
	<b>Florida</b>	<b>\$39,604</b>	<b>\$45,570</b>	<b>\$52,211</b>	<b>\$52,750</b>	<b>\$42,200</b>

\* Survey 3, February 7-11, 2011, as of August 8, 2011

**Table 8: Comparison of Average Teacher Salaries, 2006-07 through 2010-11\***

District Number	District Name	2006-07	2007-08	2008-09	2009-10	2010-11
1	Alachua	\$40,181	\$41,784	\$41,316	\$41,721	\$41,204
2	Baker	\$40,518	\$42,765	\$42,612	\$42,367	\$42,298
3	Bay	\$41,679	\$41,756	\$43,678	\$43,152	\$42,741
4	Bradford	\$39,389	\$40,427	\$39,620	\$39,287	\$39,090
5	Brevard	\$43,963	\$45,486	\$45,287	\$45,052	\$44,611
6	Broward	\$47,962	\$50,294	\$50,722	\$50,423	\$42,181
7	Calhoun	\$40,251	\$40,315	\$40,539	\$39,726	\$39,788
8	Charlotte	\$46,319	\$48,289	\$48,069	\$47,875	\$48,088
9	Citrus	\$42,700	\$44,419	\$45,033	\$44,768	\$44,765
10	Clay	\$42,398	\$44,528	\$45,500	\$45,733	\$45,353
11	Collier	\$50,804	\$51,902	\$52,710	\$53,571	\$52,320
12	Columbia	\$42,000	\$42,947	\$42,632	\$41,257	\$41,085
13	Dade	\$49,191	\$50,737	\$49,555	\$50,749	\$51,408
14	DeSoto	\$42,053	\$44,025	\$43,057	\$41,972	\$41,297
15	Dixie	\$41,345	\$41,169	\$40,775	\$41,101	\$41,540
16	Duval	\$45,014	\$46,896	\$47,087	\$46,676	\$46,541
17	Escambia	\$39,075	\$41,551	\$41,430	\$42,346	\$41,560
18	Flagler	\$46,871	\$48,366	\$48,056	\$48,606	\$48,067
19	Franklin	\$37,981	\$39,008	\$43,051	\$42,077	\$42,216
20	Gadsden	\$35,842	\$37,051	\$35,775	\$35,628	\$35,721
21	Gilchrist	\$39,892	\$42,780	\$43,180	\$44,259	\$42,931
22	Glades	\$41,447	\$43,872	\$45,099	\$44,121	\$44,196
23	Gulf	\$41,204	\$41,044	\$41,125	\$41,133	\$42,476
24	Hamilton	\$42,349	\$43,369	\$43,143	\$42,424	\$42,947
25	Hardee	\$40,261	\$43,232	\$43,370	\$42,665	\$42,354
26	Hendry	\$41,667	\$42,983	\$43,424	\$42,092	\$42,778
27	Hernando	\$39,089	\$40,753	\$41,795	\$42,398	\$42,681
28	Highlands	\$41,876	\$43,811	\$44,651	\$44,017	\$44,550
29	Hillsborough	\$43,412	\$46,489	\$46,421	\$45,735	\$45,763
30	Holmes	\$39,622	\$41,459	\$41,290	\$41,609	\$41,373
31	Indian River	\$43,162	\$44,853	\$45,030	\$46,356	\$45,796
32	Jackson	\$39,306	\$41,235	\$41,246	\$41,303	\$40,846
33	Jefferson	\$41,770	\$43,801	\$43,647	\$41,811	\$41,171
34	Lafayette	\$37,461	\$41,111	\$41,917	\$41,654	\$42,182
35	Lake	\$41,397	\$42,334	\$42,478	\$41,821	\$41,630
36	Lee	\$44,706	\$45,382	\$47,012	\$45,862	\$45,678
37	Leon	\$43,412	\$44,213	\$43,832	\$42,829	\$42,003
38	Levy	\$41,780	\$43,137	\$43,236	\$43,451	\$42,927
39	Liberty	\$39,191	\$39,812	\$39,327	\$39,766	\$40,047
40	Madison	\$40,823	\$42,038	\$41,591	\$41,634	\$40,882
41	Manatee	\$47,480	\$49,496	\$48,810	\$48,463	\$47,819
42	Marion	\$42,068	\$41,587	\$43,237	\$43,289	\$43,706
43	Martin	\$45,646	\$45,272	\$47,102	\$46,455	\$45,841
44	Monroe	\$50,775	\$54,083	\$56,272	\$56,674	\$57,798
45	Nassau	\$43,787	\$44,999	\$45,059	\$45,192	\$45,066
46	Okaloosa	\$47,538	\$50,093	\$51,446	\$51,598	\$51,082
47	Okeechobee	\$41,809	\$42,828	\$43,228	\$44,099	\$43,377
48	Orange	\$44,288	\$45,477	\$45,494	\$44,884	\$44,695
49	Osceola	\$42,851	\$44,519	\$44,639	\$45,070	\$45,574
50	Palm Beach	\$48,529	\$49,946	\$50,178	\$48,537	\$47,359
51	Pasco	\$43,472	\$44,310	\$43,901	\$43,474	\$42,710
52	Pinellas	\$45,679	\$47,269	\$46,839	\$45,851	\$45,837
53	Polk	\$41,505	\$43,325	\$43,080	\$42,761	\$42,726
54	Putnam	\$43,981	\$46,409	\$47,291	\$46,013	\$46,386
55	St. Johns	\$45,032	\$47,413	\$47,102	\$46,370	\$46,673
56	St. Lucie	\$43,399	\$44,179	\$44,066	\$43,010	\$42,413
57	Santa Rosa	\$43,196	\$44,180	\$44,685	\$45,557	\$44,561
58	Sarasota	\$52,348	\$53,809	\$55,213	\$55,886	\$55,994
59	Seminole	\$46,475	\$48,779	\$48,446	\$48,868	\$47,985
60	Sumter	\$45,508	\$46,709	\$47,470	\$47,410	\$46,528
61	Suwannee	\$43,721	\$43,715	\$45,669	\$45,396	\$46,440
62	Taylor	\$42,111	\$41,859	\$41,077	\$40,938	\$41,494
63	Union	\$35,489	\$37,369	\$38,848	\$38,763	\$37,895
64	Volusia	\$43,485	\$45,325	\$45,529	\$45,464	\$44,234
65	Wakulla	\$40,857	\$41,418	\$40,872	\$40,512	\$40,409
66	Walton	\$45,121	\$46,953	\$46,969	\$46,443	\$45,625
67	Washington	\$42,324	\$43,055	\$42,909	\$42,516	\$42,493
	<b>Districts 1-67</b>	<b>\$45,307</b>	<b>\$46,930</b>	<b>\$46,950</b>	<b>\$46,708</b>	<b>\$45,732</b>
68	School for Deaf/Blind	\$44,878	\$43,950	\$44,057	\$43,309	\$44,485
69	Dozier/Okeechobee	\$53,339	\$52,783	\$52,066	\$53,597	\$55,413
72	FAU Lab School	\$43,984	\$44,976	\$42,455	\$41,877	\$42,306
73	FSU Charter	\$33,194	\$33,446	\$33,193	\$34,824	\$33,749
74	FAMU Lab School	\$34,843	\$34,905	\$36,881	\$32,972	\$36,873
75	UF Lab School	\$36,756	\$38,239	\$38,676	\$39,420	\$39,008
	<b>Florida</b>	<b>\$45,296</b>	<b>\$46,922</b>	<b>\$46,938</b>	<b>\$46,696</b>	<b>\$45,723</b>

\* Survey 3, February 7-11, 2011, as of August 8, 2011

**Table 9: Percent Change in Average Teacher Salaries, 2009-10 to 2010-11\***

District Number	District Name	2009-10	2010-11	Percent Change 2008-09 to 2009-10
1	Alachua	\$41,721	\$41,204	-1.24%
2	Baker	\$42,367	\$42,298	-0.16%
3	Bay	\$43,152	\$42,741	-0.95%
4	Bradford	\$39,287	\$39,090	-0.50%
5	Brevard	\$45,052	\$44,611	-0.98%
6	Broward	\$50,423	\$42,181	-16.35%
7	Calhoun	\$39,726	\$39,788	0.16%
8	Charlotte	\$47,875	\$48,088	0.44%
9	Citrus	\$44,768	\$44,765	-0.01%
10	Clay	\$45,733	\$45,353	-0.83%
11	Collier	\$53,571	\$52,320	-2.34%
12	Columbia	\$41,257	\$41,085	-0.42%
13	Dade	\$50,749	\$51,408	1.30%
14	DeSoto	\$41,972	\$41,297	-1.61%
15	Dixie	\$41,101	\$41,540	1.07%
16	Duval	\$46,676	\$46,541	-0.29%
17	Escambia	\$42,346	\$41,560	-1.86%
18	Flagler	\$48,606	\$48,067	-1.11%
19	Franklin	\$42,077	\$42,216	0.33%
20	Gadsden	\$35,628	\$35,721	0.26%
21	Gilchrist	\$44,259	\$42,931	-3.00%
22	Glades	\$44,121	\$44,196	0.17%
23	Gulf	\$41,133	\$42,476	3.27%
24	Hamilton	\$42,424	\$42,947	1.23%
25	Hardee	\$42,665	\$42,354	-0.73%
26	Hendry	\$42,092	\$42,778	1.63%
27	Hernando	\$42,398	\$42,681	0.67%
28	Highlands	\$44,017	\$44,550	1.21%
29	Hillsborough	\$45,735	\$45,763	0.06%
30	Holmes	\$41,609	\$41,373	-0.57%
31	Indian River	\$46,356	\$45,796	-1.21%
32	Jackson	\$41,303	\$40,846	-1.11%
33	Jefferson	\$41,811	\$41,171	-1.53%
34	Lafayette	\$41,654	\$42,182	1.27%
35	Lake	\$41,821	\$41,630	-0.46%
36	Lee	\$45,862	\$45,678	-0.40%
37	Leon	\$42,829	\$42,003	-1.93%
38	Levy	\$43,451	\$42,927	-1.21%
39	Liberty	\$39,766	\$40,047	0.71%
40	Madison	\$41,634	\$40,882	-1.81%
41	Manatee	\$48,463	\$47,819	-1.33%
42	Marion	\$43,289	\$43,706	0.96%
43	Martin	\$46,455	\$45,841	-1.32%
44	Monroe	\$56,674	\$57,798	1.98%
45	Nassau	\$45,192	\$45,066	-0.28%
46	Okaloosa	\$51,598	\$51,082	-1.00%
47	Okeechobee	\$44,099	\$43,377	-1.64%
48	Orange	\$44,884	\$44,695	-0.42%
49	Osceola	\$45,070	\$45,574	1.12%
50	Palm Beach	\$48,537	\$47,359	-2.43%
51	Pasco	\$43,474	\$42,710	-1.76%
52	Pinellas	\$45,851	\$45,837	-0.03%
53	Polk	\$42,761	\$42,726	-0.08%
54	Putnam	\$46,013	\$46,386	0.81%
55	St. Johns	\$46,370	\$46,673	0.65%
56	St. Lucie	\$43,010	\$42,413	-1.39%
57	Santa Rosa	\$45,557	\$44,561	-2.19%
58	Sarasota	\$55,886	\$55,994	0.19%
59	Seminole	\$48,868	\$47,985	-1.81%
60	Sumter	\$47,410	\$46,528	-1.86%
61	Suwannee	\$45,396	\$46,440	2.30%
62	Taylor	\$40,938	\$41,494	1.36%
63	Union	\$38,763	\$37,895	-2.24%
64	Volusia	\$45,464	\$44,234	-2.71%
65	Wakulla	\$40,512	\$40,409	-0.25%
66	Walton	\$46,443	\$45,625	-1.76%
67	Washington	\$42,516	\$42,493	-0.05%
	<b>Districts 1-67</b>	<b>\$46,708</b>	<b>\$45,732</b>	<b>-2.09%</b>
68	School for Deaf/Blind	\$43,309	\$44,485	2.72%
69	Dozier/Okeechobee	\$53,597	\$55,413	3.39%
72	FAU Lab School	\$41,877	\$42,306	1.02%
73	FSU Charter	\$34,824	\$33,749	-3.09%
74	FAMU Lab School	\$32,972	\$36,873	11.83%
75	UF Lab School	\$39,420	\$39,008	-1.05%
	<b>Florida</b>	<b>\$46,696</b>	<b>\$45,723</b>	<b>-2.08%</b>

\* Survey 3, February 7-11, 2011, as of August 8, 2011

**Table 10: Average Teacher Salaries in Rank Order, 2010-11\***

District Number	District Name	Average Salary	Rank
44	MONROE	\$57,798	1
58	SARASOTA	\$55,994	2
11	COLLIER	\$52,320	3
13	DADE	\$51,408	4
46	OKALOOSA	\$51,082	5
8	CHARLOTTE	\$48,088	6
18	FLAGLER	\$48,067	7
59	SEMINOLE	\$47,985	8
41	MANATEE	\$47,819	9
50	PALM BEACH	\$47,359	10
55	ST. JOHNS	\$46,673	11
16	DUVAL	\$46,541	12
60	SUMTER	\$46,528	13
61	SUWANNEE	\$46,440	14
54	PUTNAM	\$46,386	15
43	MARTIN	\$45,841	16
52	PINELLAS	\$45,837	17
31	INDIAN RIVER	\$45,796	18
29	HILLSBOROUGH	\$45,763	19
	<b>FLORIDA</b>	<b>\$45,723</b>	
36	LEE	\$45,678	20
66	WALTON	\$45,625	21
49	OSCEOLA	\$45,574	22
10	CLAY	\$45,353	23
45	NASSAU	\$45,066	24
9	CITRUS	\$44,765	25
48	ORANGE	\$44,695	26
5	BREVARD	\$44,611	27
57	SANTA ROSA	\$44,561	28
28	HIGHLANDS	\$44,550	29
64	VOLUSIA	\$44,234	30
22	GLADES	\$44,196	31
42	MARION	\$43,706	32
47	OKEECHOBEE	\$43,377	33
24	HAMILTON	\$42,947	34
21	GILCHRIST	\$42,931	35
38	LEVY	\$42,927	36
26	HENDRY	\$42,778	37
3	BAY	\$42,741	38
53	POLK	\$42,726	39
51	PASCO	\$42,710	40
27	HERNANDO	\$42,681	41
67	WASHINGTON	\$42,493	42
23	GULF	\$42,476	43
56	ST. LUCIE	\$42,413	44
25	HARDEE	\$42,354	45
2	BAKER	\$42,298	46
19	FRANKLIN	\$42,216	47
34	LAFAYETTE	\$42,182	48
6	BROWARD	\$42,181	49
37	LEON	\$42,003	50
35	LAKE	\$41,630	51
17	ESCAMBIA	\$41,560	52
15	DIXIE	\$41,540	53
62	TAYLOR	\$41,494	54
30	HOLMES	\$41,373	55
14	DESOTO	\$41,297	56
1	ALACHUA	\$41,204	57
33	JEFFERSON	\$41,171	58
12	COLUMBIA	\$41,085	59
40	MADISON	\$40,882	60
32	JACKSON	\$40,846	61
65	WAKULLA	\$40,409	62
39	LIBERTY	\$40,047	63
7	CALHOUN	\$39,788	64
4	BRADFORD	\$39,090	65
63	UNION	\$37,895	66
20	GADSDEN	\$35,721	67

\* Survey 3, February 7-11, 2011, as of August 8, 2011